



**OFFICIAL PRIZE LIST  
SEPTEMBER 18 – 22, 2024**



**USEF Local Competition #334526  
WDA A Recognition #24-100  
AQHA # 915277 (Basic – Level 4 Classes only)**

Criteria for Qualifying:

- The horse qualifies.
- The horse must qualify in every level that it will be shown in at the World Show.
- For Introductory – Basic levels, the horse must earn a 63% or higher, in at least 1 WDA A Recognized show, in-person show or online show.
- For Level 1-5 the horse must earn a 60% or higher, in at least 1 WDA A Recognized show, in-person show or online show.
- The qualification period begins October 1<sup>st</sup>, 2023 and ends August 30, 2024.
- If the horse has qualified in the appropriate levels by the requirements above, there is no need to qualify for rail classes or freestyle with a score.
- NOTE: Showing in the 2023 WDA A World show does not qualify a horse for the 2024 WDA A World show.

**Facility**

Lazy E Arena  
Guthrie, OK



9600 Lazy E Drive, Guthrie, OK 73044

**Entries Open August 1, 2024**

**Entries Close: August 30, 2024**

**(Updated 3/28/2024)**

**ENTRIES SENT WITH SIGNATURE REQUIRED WILL INCUR A \$30 POST OFFICE VISIT FEE**

**WDAA Horse Lifetime Points and Awards Program Triple Point Show**

**Competitors' Parties and Silent Auction**

**All Levels of Freestyle Offered**

**Four Days of Western Dressage Tests**

**One day of Rail Classes**

**USEF MEMBERSHIPS INFORMATION**

**(see page 10 for more information on USEF memberships and horse registrations as there are new rules this year)**

**Officials**

**Judges**

Gail Matheus, KS, R WD  
Sharron Sarchet, CO, R WD  
Stephanie Soule, MT, R WD  
Eleanor Stine-Masek, AZ, R WD  
Cliff Swanson, AZ, R WD (Rail Classes)

**Stewards**

Kathy Callahan-Smith, CA  
Joan Shelton Palelek, WA

**WDAA Board of Directors and Executive Show Committee**

Dini Swanson – WDAA Executive Director  
Cindy Butler – WDAA President  
Holly Clanahan Hendrix – WDAA Vice President – Press Room Coordinator (hollyh101@yahoo.com)  
Thallia Blight – WDAA Secretary  
Sharron Sarchet – WDAA Treasurer  
Vivien Van Buren – WDAA World Show Coordinator  
Joanne Coy  
Cliff Swanson, Tami Steinbrecher, Amanda Delgado  
Mike Corcoran – Director Emeritus

**Show Manager**

Jim Porcher  
(505) 228-6865  
[jsporcher@icloud.com](mailto:jsporcher@icloud.com)

**Show Coordinator**

Vivien Van Buren  
(303) 883-6560  
[vniviv@gmail.com](mailto:vniviv@gmail.com)

**Show Secretary**

Susan Pape-Peacock  
(405) 760-0135

**Enter Online at:**

[www.ShowSecretary.com](http://www.ShowSecretary.com)

**Send Entries to:**

837 Glenlake Dr  
Edmond, OK 73013  
[susan@showsecretary.com](mailto:susan@showsecretary.com)  
Checks payable to WDAA

## WDAA WORLD SHOW TABLE OF CONTENTS

Important Dates.....	3
Online Entry Website.....	4
Fees and Refunds.....	4
Awards.....	5
Class Information.....	7
Competitors’ Hospitality and Services.....	10
Competition Rules.....	10
Exceptional Rider Division – (Exhibition).....	12
WD Suitability Walk/Jog Class Specifications.....	12
Musical Freestyle Classes.....	12
Entries, Scheduling, and Scoring.....	13
Facility Information.....	14
Accommodations and Hotels.....	17
USEF Statements.....	18
WDAA Statement of Eligibility for Exceptional Rider Classes.....	25

### Important Dates

**Entry Closing Date – August 30**

**Order Golf Carts – August 1 to August 30**

**Hilton Garden Inn WDAA Rate – book by September 8**

**Order Shavings/RV – August 1 to September 8 - <https://www.openstalls.com/>**

**Declare Breed for Breed Awards – September 17**

**Deadline to add Special Awards to your entry - September 17**

**Online Entry Website**

**Fees and Refunds**

<b>A. Class Fees</b>	
Group Classes (suitability, hack, equitation)	\$85/class
Introductory and Basic Levels	\$100/test
Exceptional Rider Classes	\$55/test
Level 1, Level 2, Level 3, Level 4, Level 5	\$125/test
Freestyles	\$145/test
<b>B. Stalling Fees</b>	
Day Stall (one night/specify night on entry blank)	\$160
Complete show stall (Sunday - Sunday 9 am)	\$250
Double stall (6 available in east barn – first come first serve)	\$500
<b>C. Administrative Fees</b>	
Office Fee	\$70
USEF Fee (\$8 USEF fee + \$15 drug fee)	\$23
Late Entry	\$25/test
Change Class Fee (after closing date)	\$25/change
Change Horse or Rider Fee	\$100
Non-competing horse	\$100
Entries sent via USPS that require a signature	\$30
Insufficient Funds Fee (check or credit card)	\$50
AQHA Process Fee (for those with AQHA registered horses that would like their scores turned into AQHA)	\$12/exhibitor

**Payment/Refund/Cancellations**

**Payment:** Entries must be postmarked by the closing date. Make checks payable to **Western Dressage Association of America**. Credit cards are accepted only if using online registration. For an entry to be accepted, a completed entry blank with signatures, a copy of the Coggins, copy of flu/rhino vaccination record, and copies of any applicable cards (or registration numbers) must be sent to show secretary.

**Payment must be made in US funds either from a US Bank or cashier's check.**

**To register online, go to [www.showsecretary.com](http://www.showsecretary.com).** Online entries will incur a 4% online convenience fee. Online entries must be completed by the closing date. No credit card entries taken after closing date.

**Refunds:** Cancellations for any reason prior to the closing date will be refunded minus office fee and online convenience fee (if applicable). Refunds will be made to the owner on file unless otherwise stated on the entry. **There will be no refunds after the closing date.** The show incurs many costs. Thank you for understanding.

**Qualifying WDAA Recognized Show:** The WDAA recognized show name, show number, and qualifying score (Introductory – Basic levels, 63% or higher, or Level 1-5 60% or higher) must be listed at the top of the entry blank or online entry. The WDAA recognized show number can be found below:

<https://wdaa.memberclicks.net/list-of-current-events>

**PLEASE DO NOT SEND ENTRIES WITH SIGNATURE REQUIRED - ENTRIES SENT WITH SIGNATURE REQUIRED WILL INCUR A \$30 POST OFFICE VISIT FEE**

## Awards

Award Sponsorship information available at [www.wdaaworldshow.org](http://www.wdaaworldshow.org)

### A. Class Awards

- Ribbons to 10<sup>th</sup> place will be awarded in all classes.
- Choice of Jacket, Vest, or Horse Cooler to the winner of each class.
- Note: Rail classes will be split into groups of no more than 15 riders to ease congestion in the arena. The top 4-6 placings in each group will return for the final of that class.
- Ties will be broken per USEF WD127.3

Tests may be picked up at the Show Secretaries office (main arena) as soon as the class is placed and marked FINAL. 1<sup>st</sup> – 10<sup>th</sup> will pick up their awards at the WDAA office (covered arena).

**Breaking Scoring Ties** – In the case of a scoring tie, ties will be broken per the USEF [WD127 – Scoring, Classification and Prize-Giving](#) rule.

### B. Division Championship Awards

- Suitable prize to division champion and reserve champion
- Ribbons to 1<sup>st</sup> through 10<sup>th</sup> place
- Additional awards to Champion and Reserve may be awarded at the discretion of the show committee

#### Division Calculations

Awarded to the highest average percentage of the top two scores at the level. One score MUST be from either test 3 or test 4 and the other score can be from any other test within the level.

Introductory Level, Basic Level, Level 1, Level 2, and Level 3

- ❖ Junior Rider
- ❖ Amateur Rider
- ❖ Open Rider

Level 4 and Level 5

- ❖ Amateur/Junior Rider
- ❖ Open Rider

Gaited Horse Introductory Level - Basic Level

- ❖ Amateur/Junior Rider
- ❖ Open Rider

Gaited Horse Level 1 – Level 5

- ❖ Open Rider

Exceptional Rider – Awarded to the highest average percentage of the top two scores.

- ❖ Physically Challenged
- ❖ Therapeutic Rider

\*Championships Award Notes

- ❖ In the event of a tie, the combination with the highest single percentage will earn the tie breaker
- ❖ Other than the Freestyle Award, the Musical freestyles DO NOT count toward championship awards

### C. Overall High Score Awards (based on the top score from one test across all levels excluding freestyle)

- High Score and Reserve High Score ribbon
  - Junior Rider (17 and under)
  - Amateur Rider (18 and over)
  - Open Rider
  - Exceptional Rider
  - Gaited Horse Rider

**D. High Score Special Awards-** To compete for these special awards, you must add these designations to your entry (on entry blank or chosen as a class in the online entry process). *Designation must be received before the first class of the show. No late designations will be allowed.*

- **Silver Spur Award** - highest scoring horse and rider team that that equals 75 years or more in age combined.
- **Veteran High Score Award** - highest scoring horse and rider team where the rider is a Military veteran.
- **World Show Greenhorn Award** - rider and horse competing for the first time with the highest score. Neither horse nor rider may have ever shown at any WDAA Western Dressage World Championship Show. This Award is for Junior and Amateur riders only.

Note – Exceptional rider and freestyle classes are not considered for Silver Spur, Veteran or Greenhorn Awards.

#### High Score Freestyle Awards

**Introductory and Basic Award** – Highest score for Introductory and Basic Freestyle Class

**Level 1 thru Level 5 Award** – Highest score for Level 1 thru Level 5 Freestyle or Costume Freestyle Classes

#### Breed High Score Awards

**Be certain to indicate one breed of horse on entry blank.** A horse may only be classified as one breed. All breed choices are final as of the close of entries. High score ribbon (top score from one test across all levels excluding freestyle) in the following categories:

(Division awards and Breed awards presented on Sunday evening at the farewell party)

- American Quarter Horse
- American Warmblood
- Andalusian
- Andalusian Cross
- Appaloosa
- Appendix
- Arabian
- Arabian Cross
- Azteca
- Connemara/Connemara Cross
- Draft Horse
- Draft Cross
- Friesian
- Friesian Cross
- Grade/Unknown
- Gypsy
- Haflinger
- Lusitano
- Missouri Fox Trotter/ Missouri Fox Trotter Cross
- Morgan
- Mule/Donkey
- Mustang
- North American Spotted Draft
- Paint
- Pinto
- POA
- Quarter Horse Cross
- Rescue
- Sport Pony
- Tennessee Walking Horse/ Tennessee Walking Horse Cross
- Thoroughbred
- Warmblood
- Oldenburg

Additional breeds may be added as requested and sponsored.

**F. USEF Horse of the Year Awards** – This show counts toward USEF Western Dressage Horse of the Year points. **It is optional to participate in this program.** If you choose to do so, you must have all the appropriate USEF horse registrations and owner/rider memberships. For more information, please contact [www.usef.org](http://www.usef.org). Please provide horse, rider, and owner USEF numbers on the entry blank.

**G. WDAA Horse Lifetime Points & Awards Program** – Scores earned at this show count triple points toward WDAA Horse Lifetime Points & Awards Program. **It is optional to participate in this program.** For more information, or to enroll in the program, please visit - <https://wdaalifetimepoints.org/>

## Class Information

Class	Description	Day	
<b>Rail Classes (8:00 am start time) *</b>			
<b>Western Dressage Suitability</b>			
(To be eligible for a Western Dressage Suitability class, a horse must not have shown in a Western Dressage competition/Test at Level 1 or above and/or shown in a Western Dressage Hack class)			
1	WD Suitability – Walk/Jog/Lope	Open	Wednesday
2	WD Suitability – Walk/Jog/Lope	Open Gaited	Wednesday
3	WD Suitability – Walk/Jog/Lope	Amateur	Wednesday
4	WD Suitability – Walk/Jog/Lope	Junior 17 and under	Wednesday
5	WD Suitability – Walk/Jog**	Open	Wednesday
6	WD Suitability – Walk/Jog**	Open Gaited	Wednesday
7	WD Suitability – Walk/Jog**	Amateur	Wednesday
8	WD Suitability – Walk/Jog**	Junior 14 – 17	Wednesday
9	WD Suitability – Walk/Jog**	Junior 13 and under	Wednesday
<b>Western Dressage Hack</b>			
10	WD Hack	Open	Wednesday
11	WD Hack	Open Gaited Horses	Wednesday
12	WD Hack	Amateur	Wednesday
13	WD Hack	Junior 17 and under	Wednesday
<b>Western Dressage Seat Equitation on the Rail Classes</b>			
14	WD Seat Equitation on the Rail Walk/Jog/Lope	Open	Wednesday
15	WD Seat Equitation on the Rail Walk/Jog/Lope	Open Gaited	Wednesday
16	WD Seat Equitation on the Rail Walk/Jog/Lope	Amateur	Wednesday
17	WD Seat Equitation on the Rail Walk/Jog/Lope	Junior 17 and under	Wednesday
18	WD Seat Equitation on the Rail Walk/Jog**	Open	Wednesday
19	WD Seat Equitation on the Rail Walk/Jog**	Open Gaited	Wednesday
20	WD Seat Equitation on the Rail Walk/Jog**	Amateur	Wednesday
21	WD Seat Equitation on the Rail Walk/Jog**	Junior 14 – 17	Wednesday
22	WD Seat Equitation on the Rail Walk/Jog**	Junior 13 and under	Wednesday
<b>LUNCH BREAK</b>			
<b>Western Dressage Seat Combined Equitation (Rail and Pattern Classes)</b>			
23	WD Seat Combined Equitation – Walk Jog (Pattern B) **	Amateur	Wednesday
24	WD Seat Combined Equitation – Walk Jog (Pattern B) **	Junior 17 and under	Wednesday
(**If a rider competes in Western Dressage Seat Combined Equitation Walk-Jog, they are prohibited competing in ANY class involving a LOPE at the same competition.)			
25	WD Seat Combined Equitation – Intermediate (Pattern B)	Amateur	Wednesday
26	WD Seat Combined Equitation – Intermediate (Pattern B)	Junior 17 and under	Wednesday
27	WD Seat Combined Equitation – Advanced (Pattern B)	Amateur	Wednesday
28	WD Seat Combined Equitation – Advanced (Pattern B)	Junior 17 and under	Wednesday

<b>Western Dressage Seat Horsemanship (Equitation Pattern Only Classes)</b>			
29	WD Horsemanship – Walk Jog (Pattern B) **	Open	Wednesday
30	WD Horsemanship – Walk Jog (Pattern B) **	Open Gaited	Wednesday
31	WD Horsemanship – Walk Jog (Pattern B) **	Amateur	Wednesday
32	WD Horsemanship – Walk Jog (Pattern B) **	Junior 17 and under	Wednesday
(**If a rider competes in Walk-Jog Horsemanship, they are prohibited from competing in ANY class involving a LOPE at the same competition)			
33	WD Horsemanship – Intermediate (Pattern B)	Open	Wednesday
34	WD Horsemanship – Intermediate (Pattern B)	Open Gaited	Wednesday
35	WD Horsemanship – Intermediate (Pattern B)	Amateur	Wednesday
36	WD Horsemanship – Intermediate (Pattern B)	Junior 17 and under	Wednesday
37	WD Horsemanship – Advanced (Pattern B)	Open	Wednesday
38	WD Horsemanship – Advanced (Pattern B)	Open Gaited	Wednesday
39	WD Horsemanship – Advanced (Pattern B)	Amateur	Wednesday
40	WD Horsemanship – Advanced (Pattern B)	Junior 17 and under	Wednesday

\* Rail classes will run back-to-back, and exhibitors are responsible for keeping track of the pace of the show and be on time for classes.

Patterns - <https://www.westerndressageassociation.org/wdaa-tests>

	Open	JR	AMT	Gaited Open	Gaited AMT/JR	
<b>Introductory Level</b>						
WDAA Introductory Level Test 1	I1O	I1J	I1A	I1GO	I1GAJ	Thursday
WDAA Introductory Level Test 2	I2O	I2J	I2A	I2GO	I2GAJ	Friday
WDAA Introductory Level Test 3	I3O	I3J	I3A	I3GO	I3GAJ	Saturday
WDAA Introductory Level Test 4	I4O	I4J	I4A	I4GO	I4GAJ	Sunday
<b>Basic Level</b>						
WDAA Basic Level Test 1	B1O	B1J	B1A	B1GO	B1GAJ	Thursday
WDAA Basic Level Test 2	B2O	B2J	B2A	B2GO	B2GAJ	Friday
WDAA Basic Level Test 3	B3O	B3J	B3A	B3GO	B3GAJ	Saturday
WDAA Basic Level Test 4	B4O	B4J	B4A	B4GO	B4GAJ	Sunday
<b>Level 1</b>						
WDAA Level 1 Test 1	11O	11J	11A	11GO		Thursday
WDAA Level 1 Test 2	12O	12J	12A	12GO		Friday
WDAA Level 1 Test 3	13O	13J	13A	13GO		Saturday
WDAA Level 1 Test 4	14O	14J	14A	14GO		Sunday
<b>Level 2</b>						
WDAA Level 2 Test 1	21O	21J	21A	21GO		Thursday
WDAA Level 2 Test 2	22O	22J	22A	22GO		Friday
WDAA Level 2 Test 3	23O	23J	23A	23GO		Saturday
WDAA Level 2 Test 4	24O	24J	24A	24GO		Sunday
<b>Level 3</b>						
WDAA Level 3 Test 1	31O	31J	31A	31GO		Thursday
WDAA Level 3 Test 2	32O	32J	32A	32GO		Friday
WDAA Level 3 Test 3	33O	33J	33A	33GO		Saturday
WDAA Level 3 Test 4	34O	34J	34A	34GO		Sunday
<b>Level 4</b>						
WDAA Level 4 Test 1	41O	41AJ		41GO		Thursday
WDAA Level 4 Test 2	42O	42AJ		42GO		Friday
WDAA Level 4 Test 3	43O	43AJ		43GO		Saturday
WDAA Level 4 Test 4	44O	44AJ		44GO		Sunday
<b>Level 5</b>						
WDAA Level 5 Test 1	51O	51AJ		51GO		Thursday
WDAA Level 5 Test 2	52O	52AJ		52GO		Friday
WDAA Level 5 Test 3	53O	53AJ		53GO		Saturday
WDAA Level 5 Test 4	54O	54AJ		54GO		Sunday
<b>Freestyle Classes (6:30 pm Evening Classes)</b>						
<b>(Freestyle classes are held Thursday, Friday, and Saturday evenings. Each evening will be limited to 15 rides total, including gaited.)</b>						
	<b>Junior, Amateur and Open Placed Separately</b>			<b>Gaited Junior, Amateur, Open Placed Together</b>		
Introductory & Basic Freestyle	FS-IB			FSG-IB		Thursday
Costume Freestyle Test of Choice (Level 1 – Level 5)	FSC-15			FSCG-15		Friday
Freestyle Test of Choice (Level 1 – Level 5)	FS-15			FSG-15		Saturday
<b>Exceptional Rider Classes (Exhibition Classes)</b>						
<b>(For more Exceptional Rider information, please visit page 10)</b>						
<b>Physically Challenged Classes – must use WDAA tests</b>						
PC Test of Choice 1				PC1		Thursday
PC Test of Choice 2				PC2		Friday
PC Test of Choice 3				PC3		Saturday
PC Test of Choice 4				PC4		Sunday
<b>Therapeutic Riding Classes – must use WDAA Therapeutic Rider tests</b>						
Therapeutic Riding 1				TR1		Thursday
Therapeutic Riding 2				TR2		Friday
Therapeutic Riding 3				TR3		Saturday
Therapeutic Riding 4				TR4		Sunday

## **Competitors' Hospitality and Services (Hospitality Services and Parties are Subject to Change)**

- Tuesday Welcome Party and Exhibitor meeting - sponsorship available
- Friday Costume Freestyle Cocktail Party (free to all – sponsorship available)
- Saturday Night Exhibitors Party, dinner, and silent auction - **sponsorship needed!!**
- Sunday Farewell Celebration and Awards Ceremony
  - All Division, Overall High Score, and Special Awards will be presented at the Farewell Celebration and Awards Ceremony, approximately 1.5 hours after the last class.
  - Free to all, so plan to attend– cash bar and a light dinner – sponsorship available.

**World Show Videographer and Exclusive Video Partner:** Total Horse Channel [www.totalhorsechannel.com](http://www.totalhorsechannel.com)

**World Show Photographer:** Vince LeMaster Photo – [www.vincelemasterphoto.com](http://www.vincelemasterphoto.com) (see page 24 for more details)

### **Competition Rules**

**This is a USEF Local Competition. NO USEF memberships or show pass fees are required to compete in this show.**

**EXCEPTION: Amateur riders must have a USEF amateur card or show in the Open division.**

**\*\*NEW THIS YEAR\*\* Due to USEF Rule GR1101, a USEF, Breed or WDAA HORSE NUMBER IS REQUIRED**

All horses competing in Federation licensed competitions must be properly identified.

Horses must have 1 of the 3 options listed below:

1. **A WDAA horse registration number** –To sign up for a FREE WDAA horse number please visit <https://wdaalifetimepoints.org/wdaa-horse-number-registration/> If you already have a WDAA Horse Lifetime Points and Awards Program (WHL PAP) horse number, that will be your WDAA horse number.
2. **A USEF horse identification number** – For a free USEF horse ID visit <https://www.usef.org/join-usef/join-renew> , join as a USEF Fan Member, once you have your USEF Fan member number, you can then sign up for your USEF Horse ID.
3. **The horses breed registration number.**

**WDAA Memberships:** All owners, trainers, and riders **MUST be a member of WDAA** to compete in this show. You may join WDAA at [www.westerndressageassociation.org](http://www.westerndressageassociation.org).

**Amateur Status:** If you are entering amateur classes, you will need to provide proof of amateur status with your entry. If you do not provide proof of amateur status, you will be placed in the open division. Because this is a USEF recognized show, the only acceptable proof of amateur status is a USEF Amateur card or EC Amateur card. Please see <http://www.usef.org> for more information on obtaining an amateur card. [GR 1306 and GR 1307](#).

**Junior Status:** Riders are eligible to compete as juniors if they are 17 years of age or less at the beginning of the 2024 competition year (December 1, 2023 – November 30, 2024). [GR 103](#).

**Numbers:** Each horse/rider combination will be assigned a unique number. You will be provided with 3 numbers, 2 large numbers for each side of your saddle blanket while showing, and 1 smaller bridle number to place on your halter or bridle when the horse is out of the stall for any other reason.

## Class Restrictions

- Horses may be ridden by two riders. Each horse/rider combination requires a separate entry with all signatures and emergency contact. [WD 102](#)
- No horse may be ridden in the same class number more than once (even with a different rider) per [WD 102.2](#)
- Horses who have shown in Western Hack are no longer eligible for Western Suitability.
- Horse/rider combinations showing in walk/jog rail classes are not eligible for other rail classes or any test other than Introductory Level (Different horse/rider combinations are eligible for other rail classes and tests)
- **Horses may not compete in more than 4 tests per day.**
- Horses may only compete in levels that are adjacent with the same rider. For example, a horse may not be ridden in a basic level test and a level two test UNLESS with a different rider. [WD 102.](#)
- A horse may be ridden by a maximum of two riders. [WD 102.](#)
- To be eligible for Intro Level, a horse/rider combination must not have shown in a Western Dressage test at First level or above in the same competition year. [WD 130.1.](#)
- If a rider competes in Walk-Jog Western Dressage Seat Equitation on the Rail, they are prohibited from competing in any class involving a lope at the same competition. [WD 144.2.c](#)

**Horses Not Competing:** Non-showing horses are allowed on the grounds if space is available. The owner must enter the horse on an entry form, pay office, stall, and non-competing horse fees and meet all health requirements.

**Tests:** 2022 WDAA Western Dressage tests - <https://www.westerndressageassociation.org/wdaa-tests>

Horsemanship Classes will use the patterns which are available at.

<https://wdaa.memberclicks.net/assets/docs/2024-WDAA-tests/EQ%20Diagrams.pdf>

**Attire and Equipment:** USEF rules and guidelines will be used for attire and equipment. For more information, please review the USEF rule by clicking this link [WD 120 121 122 123.](#)

**Dogs:** Well-mannered and quiet dogs are allowed on the grounds but must be on a leash or restrained always and you are required to clean up after your dog. No dogs in the show ring or warm-up ring. Proof of current rabies must be available upon request.

**Golf Carts:** To rent a golf cart, please sign up for it on your Entry Blank. The fee is \$450 from Sunday September 15 beginning at 12 noon and must be returned by Monday September 23 at 9 am or anytime between those dates. Please come to the WDAA Office to pick them up and return them.

**Hazardous weather, Acts of God, Accident Policy:** Management reserves the right to cancel any classes due to hazardous weather, Acts of God, accidents, or emergencies. Every effort will be made to reschedule. No refunds for cancellations due to hazardous weather, Acts of God, accidents, or emergencies.

*Every class offered herein which is covered by the rules and specifications of the current rules and of the current USEF/WDAA rules will be judged in accordance therewith.*

## Exceptional Rider Division – (Exhibition)

**Physically Challenged** classes (use standard WDAA tests) Open to individuals with a diagnosed significant physical disability. A **WDAA Statement of Eligibility for Exceptional Rider Classes** form is required to show in these classes. This form should be sent in or uploaded to an online entry (Form can be found below entry blank in this prize list.)

**Therapeutic Rider** classes (use WDAA Therapeutic Rider tests) Open to individuals with a diagnosed physical, social, or emotional disability. A **WDAA Statement of Eligibility for Exceptional Rider Classes** form is required to show in these classes. This form should be sent in or uploaded to an online entry (Form can be found below entry blank in this prize list.)

Horses and riders entered only in the Exceptional Rider Division are exempt from USEF membership requirements, and do not have to pay non-member (show pass). Federation and drug fees do not apply. Horses entered only in these classes are still subject to and must comply with the Drugs and Medication rules and are subject to drug testing. Participants must abide by all USEF regulations pertaining to attire, tack, and equipment for the recognized show. Reference [GR120](#) for additional information. Exceptional riders may not cross enter between Physically Challenged and Therapeutic classes.

For all Exceptional rider information please visit this page on the WDAA website. [Exceptional Rider Information \(westerndressageassociation.org\)](http://westerndressageassociation.org)

## WD Suitability Walk/Jog Class Specifications

Horses enter at a working jog, in a counterclockwise direction. Horse must perform all gaits both ways of the ring. Gaits shall be the working walk and working jog. Free walk on a loose rein with horse stretching forward and down to be performed in at least one direction. Horses will be asked to reverse direction at the working jog or working walk at the judge's discretion. Jog work may be ridden sitting or posting. In the lineup, horses must stand quietly and may be asked to back individually or as a group.

## Musical Freestyle Classes

All freestyle classes, including Introductory and Basic levels will be held in a 20m x 60m arena which will be in the Main Arena.

**Intro and Basic Freestyle** - Thursday night 6:30 pm, no costumes allowed, entries limited to 15 rides. Winners will be announced immediately following the last ride - High Score Junior, Amateur, Open and Gaited riders.

**Level 1- Level 5 Costume Freestyle** - Friday night following the Intro and Basic Costume Freestyle, entries limited to 15 rides. Winners will be announced immediately following the last ride - High Score Junior, Amateur, Open and Gaited riders.

**Level 1- Level 5 Freestyle** - Saturday night 6:30 pm, no costumes allowed, entries limited to 15 rides. Winners will be announced immediately following the last ride - High Score Junior, Amateur, Open and Gaited riders.

- Musical freestyle sound check is 6 pm Wednesday evening. Music will be submitted to the announcer prior to the show. A sign-up list for sound checks will be sent to freestyles riders after entry close.
- Information on how to submit music to the announcer will be provided to the Freestyle Exhibitors as their entries are received.
- Freestyle Scheduling: Freestyle classes will run after Arena 1 and Arena 2 rides are complete for the day.
- Please refer to USEF rulebook WD-9 FREESTYLE, WD131 Western Musical Freestyle and WD122.6 for Freestyle rules.

## Entries, Scheduling, and Scoring

### A. General Information:

Entries must be postmarked by the closing date. Make checks payable to WDAA. To pay with a credit card, you must use online entry which will incur an online convenience fee. Please visit [www.showsecretary.com](http://www.showsecretary.com) for online entry. Every horse/rider team requires a separate entry and will pay a separate office fee. **The USEF drug fee is paid once per horse. Email entries are NOT accepted.**

A valid health certificate is required for every horse. All horses six months and older must be accompanied by an official health certificate of state of origin issued by a state, federal or licensed accredited veterinarian, and such certificate must include a veterinarian's statement that examination was made within the past thirty (30) days and revealed the animal to be free from symptoms of any infectious disease or exposure thereto. A copy of a negative Coggins test, dated within a year of the show date and a vaccination record (Equine Influenza Virus and Equine Herpes Virus "Rhinopneumonitis" within 6 months of show date) must accompany each entry. Please refer to USEF GR 844

Please check with the state veterinarians of all states you are planning on passing through regarding possible restrictions due to current health related problems and outbreaks. It is the exhibitor's responsibility to be aware of any additional restrictions that may be in place at the time of crossing state/country boundaries.

***Do not submit any Health or Vaccination Certificates with your entries. Keep the certificates in your possession until such time as it is requested. You may be required to show health papers and proof of a negative Coggins test prior to being allowed to unload horses.***

All fees must be paid, and information supplied before receiving packet.

Entries are accepted on a first-come, first-served basis, based on postmark date. Entries may be limited.

Late entries are accepted on a space-available basis and charged a \$25/class late fee.

If the classes are oversubscribed, a "wait list" will be maintained. Horses will be moved into the show based on wait list order prior to scheduling. After the show has been timed, show secretary will work wait list horses into the show based on the best fit with the schedule. Management reserves the right to refuse any entry.

**Please include WDAA membership number for Owner, Rider, Trainer and Coach. If not provided you will be placed on the waitlist until those numbers are provided. Entry is not complete without providing these numbers.**

### **IF you are a USEF member - SAFESPORT TRAINING MUST BE CURRENT**

Reminder: All USEF Life and Senior Active members, as well as participants who have regular contact with minor athletes, are required to comply with the U.S. Center for SafeSport training requirement to be eligible to participate in the competition. All participants must adhere to the U.S. Center for SafeSport Code, USEF Safe Sport Policy, and the Minor Athlete Abuse Prevention Policies. More information about these can be found at [www.usef.org](http://www.usef.org).

## **B. Scheduling**

Ride Conflicts: Competitors with multiple horses and horses with multiple riders are urged to bring enough help. If a conflict is discovered, notify the show secretary immediately.

Final Salute Directions: The show must stay on schedule or riders with multiple horses will experience conflicts in different arenas. To help with this, after your second salute, please walk forward a few steps and turn toward A. In other words, do NOT walk all the way to C before turning to exit the arena.

Management reserves the right to change officials, limit entries, combine or cancel classes, and modify the schedule to make whatever changes are required by circumstances to the competition specifications listed herein. Management reserves the right to cancel classes insufficiently filled and to refuse or require withdrawal of an entry for cause deemed enough by Show Management.

## **C. Official Ride Times**

Acknowledgements: Entries will be acknowledged via email upon receipt by the show secretary.

Provisional Ride Times: Provisional ride times will be available on [www.ShowSecretary.com](http://www.ShowSecretary.com) about one week prior to the show. Additionally, they will be emailed.

Day Sheet: Be certain to check the day sheet, which will be posted by 7pm the night before each show day. It will reflect any last-minute scheduling changes. The day sheet will be posted online. Ride times listed on [www.ShowSecretary.com](http://www.ShowSecretary.com) will be consistent with the day sheet after 7pm.

## **D. Scores**

Tests will be scored and posted online at [www.ShowSecretary.com](http://www.ShowSecretary.com) and on a scoreboard by the show office.

It is the responsibility of the competitor to verify the accuracy of all scores. Scoring errors must be reported to the Show Secretary within one hour of the official posting of the scores from the last class of the show day during which the score was earned.

# **Facility Information**

## **A. Office Hours (Subject to change) – Phone Number – 405.293.0247**

Horse Show Secretaries Office – located in the Main indoor arena

- Monday, September 16 through Sunday, September 22. Hours: 8 am to one hour after the show
- Exhibitors are encouraged to communicate via email, text, and phone during the show. Contact information will be provided to exhibitors via email blasts prior to the show.

WDAA Office – located at the end of the covered arena

- Sunday, September 15 through Sunday, September 22- 8 am to end of show

Lazy E Stalling Office Hours- located in the barn area

- Sunday - Tuesday, September 15, 16, 17 – 9:00 am - 10:00 pm
- Wednesday, September 18 – 7:30 am – 8:30 pm
- Thursday - Saturday, September 19, 20, 21 - 7:30 am – 5:30 pm
- Sunday, September 22– 9:00am to 5:00 pm

## B. Stabling

### Availability:

- Stalls are available Sunday, September 15 beginning at 9:00 am. **THERE WILL BE NO MOVE IN PRIOR TO THIS TIME.** Stalls must be vacated by 9 am, Monday, September 23.

### Stalls:

- All horses must purchase a stall. Stalls are permanent and 10ft x 10ft on dirt floor with doors. Stall fee does NOT include initial shavings.
- Double stalls are available for larger horses (16.2 and over) and are only located in the east barn. These stalls are first come/first served and fill very fast.
- Stall chart will be loaded on show website at least one week prior to move in day. Notify the show secretary immediately with any questions.
- Stalls will be locked and you must check in at the stalling office upon arrival to have your stalls unlocked.

### Late Arrivals:

- There will be no 24-hour staffing at the Lazy E. If you plan to arrive after the hours posted above, you must contact the Lazy E staff at 405-293-0246. Please call during stall office hours as soon as practical to assure you have access to your stalls and RV location upon arrival.

### Stabling Groups:

- Please note stalling groups with your entry. Your group should decide on a “group name” that all competitors provide on their entry. This is the **ONLY** way you will be stabled together.

### Priority Stalling:

- End stalls will be allocated based on group size and sponsorship. Groups or individuals sponsoring at least \$400, will be placed on the priority list for an end stall.
- Priority stalling assignments are based upon sponsorship and the number of continuous years as an exhibitor and sponsor of the World Show.
- To keep priority for certain stalls the exhibitor/group must continuously sponsor and attend the World Show.
- Sponsorships must be received by the entry closing date in order to count toward priority stalling.
- Each group must have a group name that is the same on all entry forms (for example “Group from Idaho”)
- There are 22 end stalls in the west barn but 6 have wash racks. Another 22 end stalls are available in the east barn.

### Shavings

- Shavings **MUST** be purchased through Lazy E Arena. **NO OUTSIDE SHAVINGS ALLOWED.**
- You may purchase shavings upon arrival at the stalling office during posted hours. Exhibitors are asked to preorder shavings, only a limited number of shavings will be delivered during the show and only in the evenings.
- Use this link below to buy feed or shavings and reserve an RV spot through the facility - <https://www.openstalls.com/>. Link to order will open on August 1. **Deadline to order online is September 8**
- Stall Office number is 405.293.0247.

### C. Arenas

- Footing in the main arena and covered arena are sand/clay.
- Arena Size: Four show arenas. The small ring (20m x 40m) will be used for Introductory and Basic level.
- All other levels will be in the standard 20m x 60m ring, including all freestyle.
- Rail classes will be held in the Main arena in an area approximately 50m x 60m.

### Schooling

- Sunday: Horses may work in all 4 show rings from 12:00 pm to 10 pm.
- Monday: Horses may work in all 4 show rings from 7 am to 10 pm.
- Tuesday: Horses may work in Rings 3 and 4 from 7 am to 10 pm. Rings 1 and 2 from 7 am to 5:00 pm.
- Wednesday: Horses may work in Rings 3 and 4 from 7 am to 10 pm. Rings 1 and 2 will open for schooling after the completion of rail classes (classes 1-21) at approximately 6 pm until 10 pm.
- Thursday – Sunday: During competition hours, only the next 5 horses will be allowed in Ring 1 & 2 warmup area and only the next 3 horses will be allowed in Ring 3 & 4 warmup area.
- Sunday – Sunday: weather permitting, the Priefert arena near the East barns will be available all day.

### Turnouts and Lunging

- Turnout and Lunging is available in designated areas only. There are several arenas located near the barns. No horses may be left unattended in any of these arenas at any time. These areas will be clearly marked.
- Please be considerate of any others wishing to use the turnouts.

Hand walking around the show arenas on the show day is permitted prior to the show beginning.

Trail Rides are welcome and encouraged around designated areas of the Lazy E.

### D. Facility Location and Parking

Take exit 151 for Seward Road.

Turn right onto Seward Road & go 2.5 miles Continue onto Douglas Blvd for 1 mile

Turn left onto E. Forrest Hills Rd and go .7 miles Turn right onto Lazy E Drive.

Google maps address 9600 Lazy E Drive Guthrie, OK 73044 Parking: Sufficient parking for trailers and vehicles.

**E. Concessions:** Food will be available during the show.

### F. Veterinarian and Farrier on call

**Veterinarian:** Equine Medical Associates / Dr. J. Mike Johnston

**Vet Address:** 2625 W I- 35 Frontage Rd, Edmond, OK 73013

**Vet Phone Number:** 405-348-3130

**Farrier:** Matthew Luster -405 694 6349

### G. Nearest Surgical Facility: Oakridge Equine Hospital

o Address: 6675 E. Waterloo Road, Edmond, OK 73034

o Phone: 405-359-5002

o Directions 6.4 miles to Oakridge Equine Hospital)

Head north on Lazy E Dr toward Forrest Hills Rd

Turn left onto E. Forrest Hills Rd and drive .7 miles

Turn left on to S. Douglas Blvd and drive 4 miles

Turn right onto NE 248<sup>th</sup> (E. Waterloo Rd) and drive .1.2 miles

Destination will be on the right

## Accommodations and Hotels

### **Hilton Garden Inn Edmond/OKC North-Edmond OK**

2833 Conference Drive,  
Edmond, OK 73034  
(405) 285 0900

The room blocks are from Friday September 13 - 23, 2024  
It is the closest Hotel to the Lazy E Arena - \$119/night – includes breakfast

**Group name:** Western Dressage World Championship Show 2024

**Booking link:** <https://www.hilton.com/en/attend-my-event/westerndressagechampionshipshow/>

**Group dates:** September 13 - 23, 2024

**Group code:** G4WDAA

**Reservations must be made by August 23, 2024**

### **Fairfield Marriott Edmond**

301 Meline Drive  
Edmond, OK 73034  
405 341 4818

The room blocks are from Saturday September 14 - Monday September 23, 2024:

Standard King Room - \$104./ night + tax (limited supply of King Rooms)

Double Queen - \$119/night +tax

Suite: King bed, sitting area, sofa bed, 2 TV's, \$119/ night plus tax

For all 3 room sizes, price includes free hot breakfast

**To get rate, please book by September 1, 2024.**

### **Lazy E RV Hookups (Deadline – September 8)**

- \$60\*/night (water, power and sewer by arena)
- \$50\*/night (water, power only by stalls)
- \$40\*/night (water and power only by arena).

**\*NOTE – prices are subject to change.**

- Use this website to reserve an RV spot, <https://www.openstalls.com/>
- This is recommended for groups who would like spaces together. Or you may reserve an RV hookup when you arrive at the stall office during posted hours.

## USEF Statements

### GR845 – Equine Vaccination Rule

At Federation licensed competitions, horses entering the grounds must be accompanied by documentation of Equine Influenza Virus and Equine Herpes Virus (Rhinopneumonitis) vaccinations within six months prior to entering the stables. Horses not in compliance with this rule may be required to leave the competition grounds upon request by Competition Management. Documentation should consist of one of the following methods mentioned below. The frequency of vaccine administration should be per the vaccine manufacturers or veterinarian's recommendations. It is recommended that vaccines are administered by or under the direction of a veterinarian. 2. In the case of vaccines administered by a veterinarian, the exhibitor, upon request by Competition Management, must provide documentation from the veterinarian on documenting that the horse in question received the vaccinations; name of the vaccines and date of vaccine administration. 3. In the case of vaccines administered by a person other than a veterinarian, the exhibitor, upon request by Competition Management, must provide a receipt of the vaccine purchase which is signed by the owner, or agent with care, custody, and control of the horse; name, serial number, and expiration date of the vaccine; and date of vaccine administration. 4. In the case of a horse that is unable to receive either of the vaccinations due to a history of adverse reactions, the exhibitor, upon request by Competition Management, must provide a letter from the veterinarian on official letterhead stating that the horse in question cannot be vaccinated due to medical concerns and a log of temperatures taken twice daily for the seven days prior to entering the competition grounds. These horses must also have their temperature taken and logged twice daily while on the competition grounds. The log of temperatures should be provided to the Competition Management, steward, or technical delegate when requested. 5. Competition Management may not amend or enhance vaccination requirements without prior approval of the Veterinary Committee.

### Motorized Vehicle Statement

Minors who do not have a valid driver's license which allows them to operate a motorized vehicle in the state in which they reside will not be permitted to operate a motorized vehicle of any kind, including, but not limited to, golf carts, motorcycles, scooters, or farm utility vehicles, on the competition grounds of licensed competitions. Minors who have a valid temporary license may operate the above-described motorized vehicles as long as they are accompanied by an adult with a valid driver's license. The parent/legal guardian or individual who signs the entry blank as a parent or guardian of a minor operating a motorized vehicle in violation of this rule are solely responsible for any damages, claims, losses, or actions resulting from that operation. Violations of this rule will be cause for penalties against those responsible for the child committing the offense. Wheelchairs and other mobility assistance devices for individuals with disabilities are exempt from this rule. The unsafe use of personal electronic transport devices, as determined by the competition officials and management in their sole discretion, that do not require a driver's license to operate, including but not limited to segways, hover boards, and single wheeled scooters is prohibited on competition grounds. Operating such devices in areas where people gather may be deemed "unsafe use" if there is a risk of harm to others. If the operator of the device is a minor, the parent/legal guardian or individual who signs the entry blank as a parent or guardian of a minor operating the device in violation of this rule is accountable and may be subject to penalties. Wheelchairs and other mobility assistance devices for individuals with disabilities are exempt from this rule.

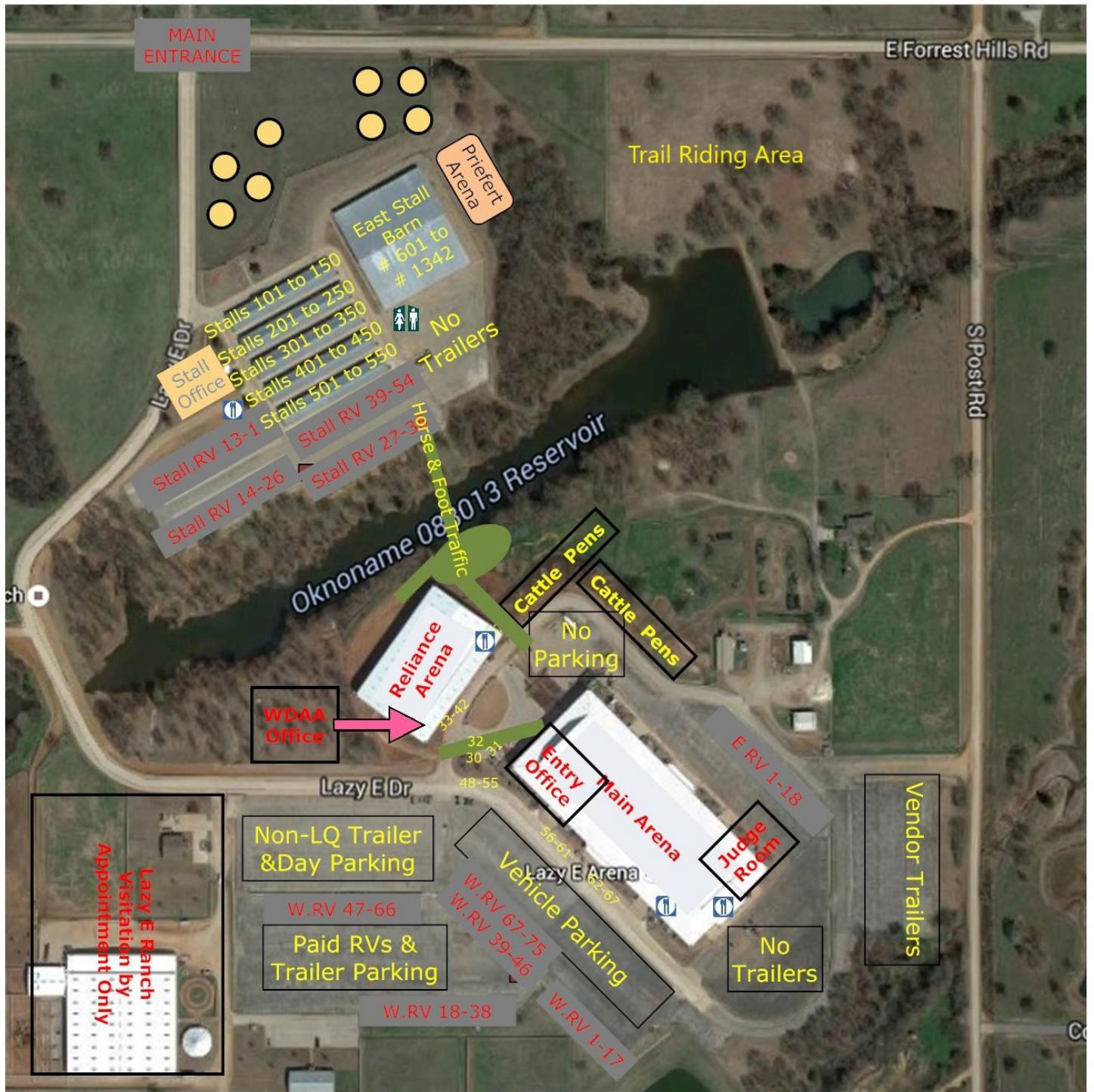
### USEF Membership Statement

USEF MEMBERSHIP STATEMENT *DR901.9* Life, senior active and junior active members shall be eligible to participate in all classes at Regular Competitions, Eventing Competitions at the Modified Level or above and Combined Driving Competitions at the Advanced Level, Dressage, Reining and Vaulting Competitions and Endurance Rides. A non-member may participate as a handler, rider, driver, owner, lessee, or agent at Regular Competitions, Eventing Competitions, Dressage Competitions, Reining Competitions and Combined Driving Competitions upon payment of a Show Pass fee. Participants in the following classes are exempted from the Requirements of this rule: 1) leadline; 2) exhibitions; 3) games and races; 4) classes for 4-H members; 5) walk trot and academy classes (academy classes are classes limited to horses used regularly in a lesson program); 6) USDF introductory level tests, pas de deux and quadrille classes; 7) assistant handlers in Dressage Sport Horse Breeding classes.

### Sharps Disposal

In accordance with USEF GR1210.4, competition management shall place a minimum of one Sharps container per each competition, whether or not stabling is provided. Additionally, at least one sharps container per fifty occupied stalls for the disposal of needles and other disposable sharp instruments in convenient locations in barns housing show horses. It is the competition management's responsibility to replace such containers when full and dispose of them properly. Competition management may fine any individuals, including trainers, owners, exhibitors, or their agents, up to \$100.00 for improper disposal of needles or other sharp disposable instruments.

Lazy E Facility Map



USEF Competition Name: WDAA Western Dressage World Championship

USEF#

Competition Division(s) and Rating(s):

Local Competition

334526



# MAAPP

## MINOR ATHLETE ABUSE PREVENTION

### LEARN ABOUT MAAP POLICIES



Safe Sport Training



Local Travel



One-On-One Interactions



Social Media & Electronic Communications



Read about these & more at [usef.org/MAAPP](https://usef.org/MAAPP)

### REPORT MAAP POLICY VIOLATIONS



[usef.org/safe-sport/reporting](https://usef.org/safe-sport/reporting)

859-225-6915 or Text Anonymously 855-682-8733



## 2024 WDAA World Championship Show Entry Blank

(Please complete a separate entry blank for each horse/rider combination)

**For qualifying scores, please attach a document showing WDAA Recognized Show Name, WDAA Recognition Number, Class Name entered, and score earned.**

### Horse Information

Name \_\_\_\_\_ Sex \_\_\_\_\_ Color \_\_\_\_\_ Year of Birth \_\_\_\_\_ Height: \_\_\_\_\_

Breed: \_\_\_\_\_ [mandatory to fill in at least 1: Breed # \_\_\_\_\_ USEF # \_\_\_\_\_ WDAA Horse # \_\_\_\_\_]

### Rider Information

Name \_\_\_\_\_ WDAA # \_\_\_\_\_ USEF # (optional unless amateur): \_\_\_\_\_

Address \_\_\_\_\_ City, State, Zip \_\_\_\_\_

Cell Phone \_\_\_\_\_ Email \_\_\_\_\_

Rider Division \_\_\_\_\_ Open \_\_\_\_\_ Junior \_\_\_\_\_ Adult Amateur \_\_\_\_\_

### Owner Information

Name \_\_\_\_\_ WDAA # \_\_\_\_\_ USEF # (Optional) \_\_\_\_\_

Address \_\_\_\_\_ City, State, Zip \_\_\_\_\_

Cell Phone \_\_\_\_\_ Email \_\_\_\_\_

### Trainer Information

Name \_\_\_\_\_ WDAA # \_\_\_\_\_ USEF # (optional) \_\_\_\_\_

Cell Phone \_\_\_\_\_ Email \_\_\_\_\_

### Class Information

Number _____	Description _____	Fee _____
Number _____	Description _____	Fee _____
Number _____	Description _____	Fee _____
Number _____	Description _____	Fee _____
Number _____	Description _____	Fee _____
Number _____	Description _____	Fee _____
Number _____	Description _____	Fee _____
Number _____	Description _____	Fee _____

#### High Score Special Awards

Check those you are eligible for:

- Silver Spur Award
- Greenhorn Award
- Military Veteran Award

**Total Class Fees \$ \_\_\_\_\_**

Horse Stall (Sunday 9 am – Monday 9 am) Single \$250/Double \$500 \_\_\_\_\_

Tack Stall (Sunday 9 am – Monday 9 am) \$250 \_\_\_\_\_

One Night Stall \$165 \_\_\_\_\_

One Night Tack \$165 \_\_\_\_\_

**Total Stall Fees \$ \_\_\_\_\_**

Office Fee \$70       \$70      

USEF Fee \$23/horse       \$23      

Late Fee \$25/test \_\_\_\_\_

Non-Compete \$100 \_\_\_\_\_

Golf Cart \$450 \_\_\_\_\_

AQHA Fee \$12/exhibitor \_\_\_\_\_

**Total Other Fees \$ \_\_\_\_\_**

**Stabling Group:** \_\_\_\_\_

**TOTAL FEES \$ \_\_\_\_\_**

**Make checks payable to Western Dressage Association of America and mail to 837 Glenlake Drive, Edmond, OK 73013**

**MUST BE US DOLLARS - ENTRIES SENT WITH SIGNATURE REQUIRED WILL INCUR A \$30 POST OFFICE VISIT FEE**



# FEDERATION ENTRY AGREEMENT

By entering a Federation-licensed Competition and signing this entry blank as the Owner, Lessee, Trainer, Manager, Agent, Coach, Driver, Rider, Handler, Vaulteur or Longeur and on behalf of myself and my principals, representatives, employees and agents, I agree that I am subject to the Bylaws and Rules of the United States Equestrian Federation, Inc. (the "Federation") and the local rules of \_\_\_\_\_ (Competition). I agree to be bound by the Bylaws and Rules of the Federation and of the competition. I will accept as final the decision of the Hearing Committee on any question arising under the Rules, and agree to release and hold harmless the competition, the Federation, their officials, directors and employees for any action taken under the Rules. I represent that I am eligible to enter and/or participate under the Rules, and every horse I am entering is eligible as entered. I also agree that as a condition of and in consideration of acceptance of entry, the Federation and/or the Competition may use or assign photographs, videos, audios, cable - casts, broadcasts, internet, film, new media or other likenesses of me and my horse taken during the course of the competition for the promotion, coverage or benefit of the competition, sport, or the Federation. Those likenesses shall not be used to advertise a product and they may not be used in such a way as to jeopardize amateur status. I hereby expressly and irrevocably waive and release any rights in connection with such use, including any claim to compensation, invasion of privacy, right of publicity, or to misappropriation. The construction and application of Federation rules are governed by the laws of the State of New York, and any action instituted against the Federation must be filed in New York State. See GR908.4.

If not currently a USEF Active Competing member or Subscriber, I acknowledge that I will be enrolled for no cost as a USEF Fan and my USEF Fan Account will continue to annually automatically renew in USEF's sole discretion. Additionally, I acknowledge that the benefits of a USEF Fan are subject to change without notice. USEF may in its sole discretion, at any time, terminate my USEF Fan status. I acknowledge that I may opt out at any time by going to My USEF Dashboard or calling (859) 810-8733.

**BY SIGNING BELOW, I AGREE** that I have read, understand, and agree to be bound by all applicable Federation Bylaws, rules, and policies including the USEF Safe Sport Policy and Minor Athlete Abuse Prevention Policies (MAAPP) as published at www.usef.org, as amended from time to time, as well as all terms and provisions of this Prize List. If I am signing and submitting this Agreement electronically, I acknowledge that my electronic signature shall have the same validity, force and effect as if I affixed my signature by my own hand.

**RIDER/DRIVER/HANDLER/VAULTER/LONGEUR** (mandatory)

Signature: \_\_\_\_\_

Print Name: \_\_\_\_\_

**TRAINER** (mandatory)

Signature: \_\_\_\_\_

Print Name: \_\_\_\_\_

**OWNER/AGENT** (mandatory)

Signature: \_\_\_\_\_

Print Name: \_\_\_\_\_

**COACH** (if applicable)

Signature: \_\_\_\_\_

Print Name: \_\_\_\_\_

Parent/Guardian Signature: (Required if Rider/Driver/Handler/Vaulteur/Longeur is a minor) \_\_\_\_\_

Print Parent//Guardian Name: \_\_\_\_\_ Emergency Contact Phone No. \_\_\_\_\_

Is Rider/Driver/Vaulteur a U.S. Citizen:  Yes  No

### WDAA CODE OF CONDUCT

As part of the WDAA Affiliation Agreement with USEF, WDAA must enforce the following policy for WDAA members, Board of Directors, officers, employees, volunteers, and contractors who provide substantial services to WDAA:

**Code of Conduct** - Applicable to all involved in WDAA Activities

<https://wdaa.memberclicks.net/assets/docs/Policy-Forms/WDAA%20Code%20of%20Conduct.pdf>

All WDAA policies can be found here, [WDAA Policy Documents \(westerndressageassociation.org\)](http://wdaa.org/wdaa-policy-documents)

I agree to the code of conduct stated above



## WAIVER AND RELEASE OF LIABILITY, ASSUMPTION OF RISK AND INDEMNITY AGREEMENT

For and in consideration of United States Equestrian Federation, Inc. dba US Equestrian ("USEF") allowing me, the undersigned, to participate in any capacity (including as a rider, driver, handler, vaulter, longeur, lessee, owner, agent, coach, official, trainer or volunteer) in a USEF sanctioned, licensed or approved event or activity, including but not limited to equestrian clinics, practices, shows, competitions and related or incidental activities and ("USEF Event" or "USEF Events"); I, for myself, and on behalf of my spouse, children, heirs and next of kin, and any legal and personal representatives, executors, administrators, successors,, and assigns, hereby agree to and make the following contractual representations pursuant to this Agreement (the "Agreement"):

**A. RULES AND REGULATIONS:** I hereby agree that I have read, understand, and agree to be bound by all applicable Federation Bylaws, rules, and policies including the USEF Safe Sport Policy and Minor Athlete Abuse Prevention Policies (MAAPP) as published at www.usef.org, as amended from time to time.

**B. ACKNOWLEDGMENT OF RISK:** I knowingly, willingly, and voluntarily acknowledge the inherent risks associated with the sport of equestrian and know that horseback riding and related equestrian activities are inherently dangerous, and that participation in any USEF Event involves risks and dangers including, without limitation, the potential for serious bodily injury (including broken bones, head or neck injuries), sickness and disease (including communicable diseases), trauma, pain & suffering, permanent disability, paralysis and death; loss of or damage to personal property (including my mount & equipment) arising out of the unpredictable behavior of horses; exposure to extreme conditions and circumstances; accidents involving other participants, event staff, volunteers or spectators; contact or collision with other participants and horses, natural or manmade objects; adverse weather conditions; facilities issues and premises conditions; failure of protective equipment (including helmets); inadequate safety measures; participants of varying skill levels; situations beyond the immediate control of the USEF Event organizers and competition management; and other undefined, not readily foreseeable and presently unknown risks and dangers ("Risks").

### EQUINE ACTIVITY LIABILITY ACT WARNING:

**CAUTION: HORSEBACK RIDING AND EQUINE ACTIVITIES CAN BE DANGEROUS. RIDE AT YOUR OWN RISK.**

**Under the laws of most States, an equine activity sponsor or equine professional is not liable for any injury to, or the death of, a participant in equine activities resulting from the inherent risks of equine activities.**

**C. ASSUMPTION OF RISK:** I understand that the aforementioned Risks may be caused in whole or in part or result directly or indirectly from the negligence of my own actions or inactions, the actions or inactions of others participating in the USEF Events, or the negligent acts or omissions of the Released Parties defined below, and I hereby voluntarily and knowingly assume all such Risks and responsibility for any damages, liabilities, losses, or expenses that I incur as a result of my participation in any USEF Events. I also agree to be responsible for any injury or damage caused by me, my horse, my employees or contractors under my direction and control at any USEF Event.

**D. WAIVER AND RELEASE OF LIABILITY, HOLD HARMLESS AND INDEMNITY:** In conjunction with my participation in any USEF Event, I hereby release, waive and covenant not to sue, and further agree to indemnify, defend and hold harmless the following parties: USEF, USEF Recognized Affiliate Associations, the United States Olympic & Paralympic Committee (USOPC), USEF clubs, members, Event participants (including athletes/riders, coaches, trainers, judges/officials, and other personnel), the Event owner, licensee, and competition managers; the promoters, sponsors, or advertisers of any USEF Event; any charity or other beneficiary which may benefit from the USEF Event; the owners, managers, or lessors of any facilities or premises where a USEF Event may be held; and all directors, officers, employees, agents, contractors, and volunteers of any of the aforementioned parties (**Individually and Collectively, the "Released Parties" or "Event Organizers"**), with respect to any liability, claim(s), demand(s), cause(s) of action, damage(s), loss, or expense (including court costs and reasonable attorney fees) of any kind or nature ("**Liability**") which may arise out of, result from, or relate in any way to my participation in the USEF Events, including claims for Liability caused in whole or in part by the negligent acts or omissions of the Released Parties.

**E. COMPLETE AGREEMENT AND SEVERABILITY CLAUSE:** This Agreement represents the complete understanding between the parties regarding these issues and no oral representations, statements or inducements have been made apart from this Agreement. If any provision of this Agreement is held to be unlawful, void, or for any reason unenforceable, then that provision shall be deemed severable from this Agreement and shall not affect the validity and enforceability of any remaining provisions.

**I HAVE CAREFULLY READ THIS DOCUMENT IN ITS ENTIRETY, UNDERSTAND ALL OF ITS TERMS AND CONDITIONS, AND KNOW IT CONTAINS AN ASSUMPTION OF RISK, RELEASE AND WAIVER FROM LIABILITY, AS WELL AS A HOLD HARMLESS AND INDEMNIFICATION OBLIGATIONS.**

By signing below, I (as the participant or as the Parent/Legal Guardian of the minor identified below) hereby accept and agree to the terms and conditions of this Agreement in connection with my (or the minor's) participation in any USEF Event. If, despite this Agreement, I, or anyone on my behalf or the minor's behalf, makes a claim for Liability against any of the Released Parties, I will indemnify, defend and hold harmless each of the Released Parties from any such Liabilities as the result of such claim.

**The parties agree that this agreement may be electronically signed. The parties agree that the electronic signatures appearing on this agreement are the same as handwritten signatures for the purposes of validity, enforceability, and admissibility.**

RIDER/DRIVER/HANDLER/VAULTER/LONGEUR  OWNER  TRAINER  OFFICIAL  STAFF  VOLUNTEER  COACH (IF APPLICABLE)

Signature: \_\_\_\_\_ Date: \_\_\_\_\_ Print Name: \_\_\_\_\_

Parent/Guardian Signature: (Required if Rider/Driver/Handler/Vaulter/Longeur is a minor) \_\_\_\_\_ Date: \_\_\_\_\_

Print Parent//Guardian Name: \_\_\_\_\_ Emergency Contact Phone No. \_\_\_\_\_

11.16.23

UNITED STATES EQUESTRIAN FEDERATION : 4001 WING COMMANDER WAY : LEXINGTON, KY 40511 : 859.810.8733 : FAX 859.721.1151 : USEF.ORG

© United States Equestrian Federation® All rights reserved. Reproduction without permission is strictly prohibited.



Vince LeMaster  
PHOTOGRAPHY

# SHOW SPECIALS

HIGH RESOLUTION DIGITAL IMAGES

**\* BUY 2 GET 1 FREE \***

**\* BUY 10 OR MORE HIGH RESOLUTION - 40% OFF \***

8X10 PRINTS

**\* BUY 3 GET 1 FREE \***

SHOW PROOFS AVAILABLE ONLINE AT:

**WWW.VINCELEMASTERPHOTO.COM**

**SHOW SPECIAL ENDS ONE WEEK AFTER THE SHOW!!!**



**SCAN CODE**



**TO VIEW  
SHOW PROOFS**



# WESTERN DRESSAGE ASSOCIATION<sup>®</sup>

OF AMERICA

---

DATE \_\_\_\_\_



## WDA A Statement of Eligibility for Exceptional Rider Classes

EXHIBITOR NAME \_\_\_\_\_

EMAIL ADDRESS \_\_\_\_\_

PHONE NUMBER \_\_\_\_\_

This letter verifies that (name of exhibitor) \_\_\_\_\_ is eligible to participate in WDA A Physically Challenged and/or WDA A Therapeutic Riding classes at WDA A hosted competitions. These competitive classes are offered to those with a diagnosed disability, physical and/or social or emotional.

Signed \_\_\_\_\_ Licensed Medical Professional

Printed name \_\_\_\_\_ Date \_\_\_\_\_

Practice name \_\_\_\_\_

Practice address \_\_\_\_\_

Email address \_\_\_\_\_

Phone number \_\_\_\_\_

Please include this signed form with your mailed entry and upload or email for online entries.



WESTERN DRESSAGE ASSOCIATION<sup>®</sup> OF AMERICA (WDA A)  
P.O. BOX 2349 PARKER, CO 80134  
(720) 662-4584  
[WWW.WESTERNDRESSAGEASSOCIATION.ORG](http://WWW.WESTERNDRESSAGEASSOCIATION.ORG)  
[INFO@WESTERNDRESSAGEASSOCIATION.ORG](mailto:INFO@WESTERNDRESSAGEASSOCIATION.ORG)

